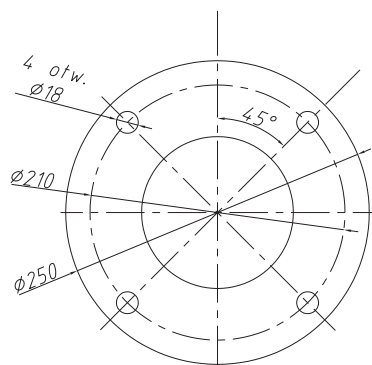




Flanges adapter hook for KS150L



GENERAL CHARACTERISTIC

Pumps MSK2-90 are designed for pumping sanitary sewage and industrial applications, drainage water and rainwater . They are used in plumbing, sewage treatment plants and pumping stations and many types of drainage systems. Free passage through the channel impeller solids of up to 100mm provides seamless cooperation with pipelines with diameters DN100, DN150 and larger. The pumps have a limiter of temperature in three phases of the stator windings of the motor and switch of humidity. These elements preclude the possibility of damage to the engine in case of overload or moisture getting into it. The motor is sealed from the side of the pump double mechanical seal in oil chamber. The standard pump is equipped with 10 metres cable in neoprene sheath.



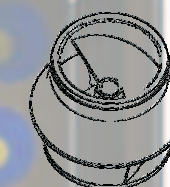
OPERATING PARAMETERS

The density of sewage to 1100 kg / m³
 Fluid temperature to 40 ° C
 Maximum number of starts 25 / hour

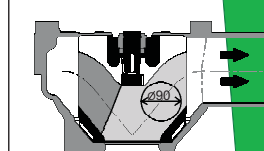
**Submersible pumps
MSK2-90**

Sewage, industrial
and rainwater

Channel impeller



Free passage

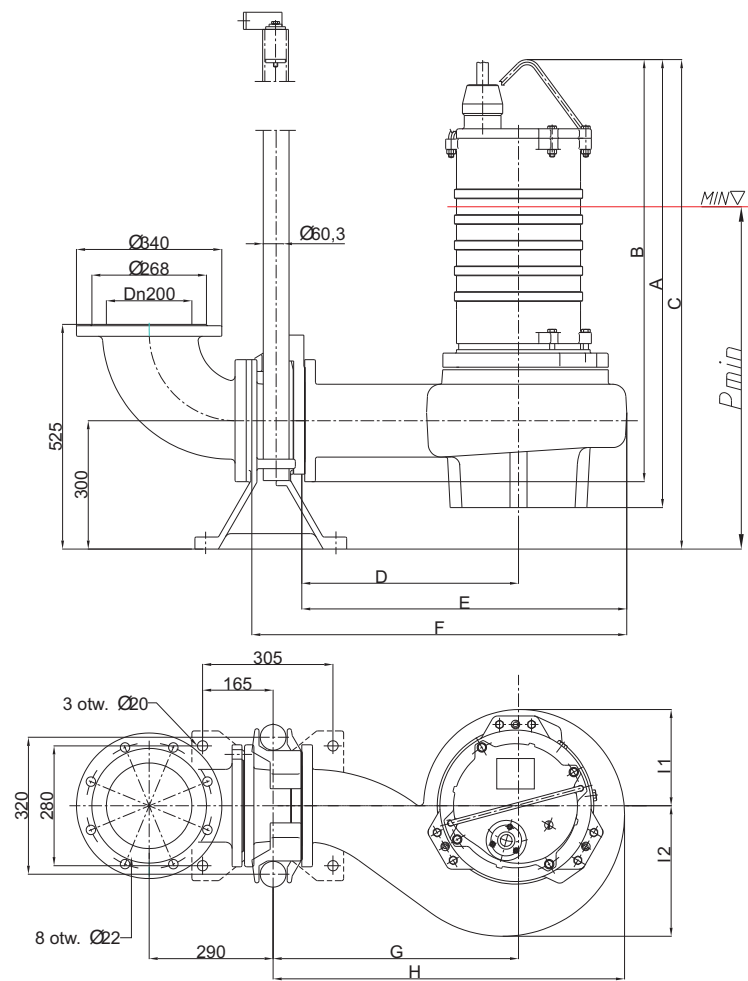


No.	Pump	Power [kW]	n [rpm]	Qn [l/s]	Hn [m]	In ¹ [A]	Z _{Ps} ² [A]	cosφ	η [%]	Passage [mm]	Auto coupling	Impeller type	Mass ³ [kg]
1	124	12,5	1455	74	7,2	24,1	32	0,89	89	90	KS150L	2- channels	267
2	154	15,0	1460	76	8,6	27,7	32	0,87	89	90	KS150L	2- channels	282
3	184	18,5	1455	82	11,0	35,1	40	0,85	89	90	KS150L	2- channels	302
4	224	22,0	1455	87	13,0	43,2	63	0,92	92	90	KS150L	2- channels	317

¹ Starting intermediate star-delta

² Motor overload protection

³ 25kg of pump mass include a pump hook and 10m cable



Pumps MSK2-90-124-154-184-224
suspended for auto coupling KS150L

No.	Pump	A	B	C _{KS150L}	D	E	F	G	H	I ₁	I ₂	P _{MIN}
1	124	1047	986	1144	507	760	877	574	822	225	305	800
2	154	1047	986	1144	507	760	877	574	822	225	305	800
3	184	1047	986	1144	507	760	877	574	822	225	305	800
4	224	1047	986	1144	507	760	877	574	822	225	305	800

APPLIED MATERIALS

Motor body, pump body, impeller, hook, auto coupling - cast GJL200, GJL250.
The pump shaft - stainless steel.
Fasteners - Stainless steel.
Bearings - ball single row, ball double oblique.
Front double mechanical seal.
Epoxy paint finish.

PUMP MOTORS 400V / 50Hz

Insulation class F

STANDARDS

ISO 9908
ISO 2548 STANDARD CLASS B

METALCHEM-WARSZAWA Spółka Akcyjna

Stuzienna 7a street, 01-259 Warsaw, Poland
www.metalchemsa.pl

Headquarters: +48 22 837 12 70
Secretariat: +48 22 836 07 61
Fax: +48 22 836 89 50

